



Xede Wiring Diagram 2009 Ford Ranger 3.0L TDCI Manual Transmission

Wiring Details:

Note: Connectors are drawn as seen from the wire side.

XEDE Configuration:	S
XEDE Revisions:	All
XEDE Harness:	XH-WBG (Generic Harness)
Special Notes / Information:	See Diagram Over Page

* One or both of the chassis grounds must be connected if any of the following XEDE features are to be used: Water spray, Boost control, Auxiliary injector drive.

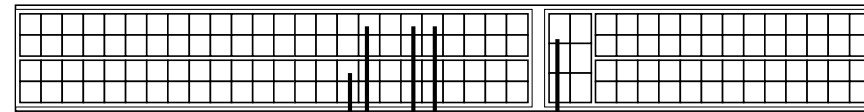
** Red wire in 3 core shielded cable

DO NOT terminate the shield wire in the 3 core cable.

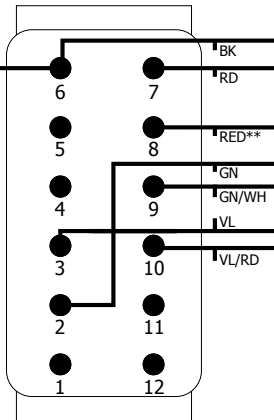
There are 2 black wires, DO NOT use the black wire from the shielded cable unless specifically instructed.

ECU Terminals

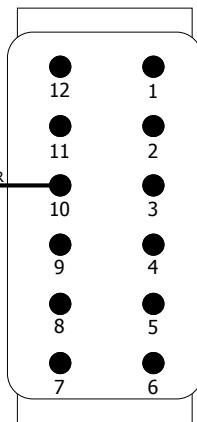
View from back of connectors
(wire view)



Connector 'A' (Grey)

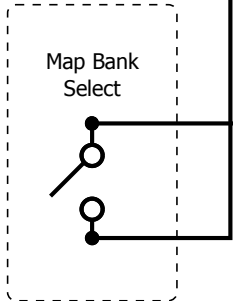


Connector 'B' (Black)



Optional

Map Bank Select



View from back of connectors
(wire view)

CRFP MAP SIG GND CAS+ +12V